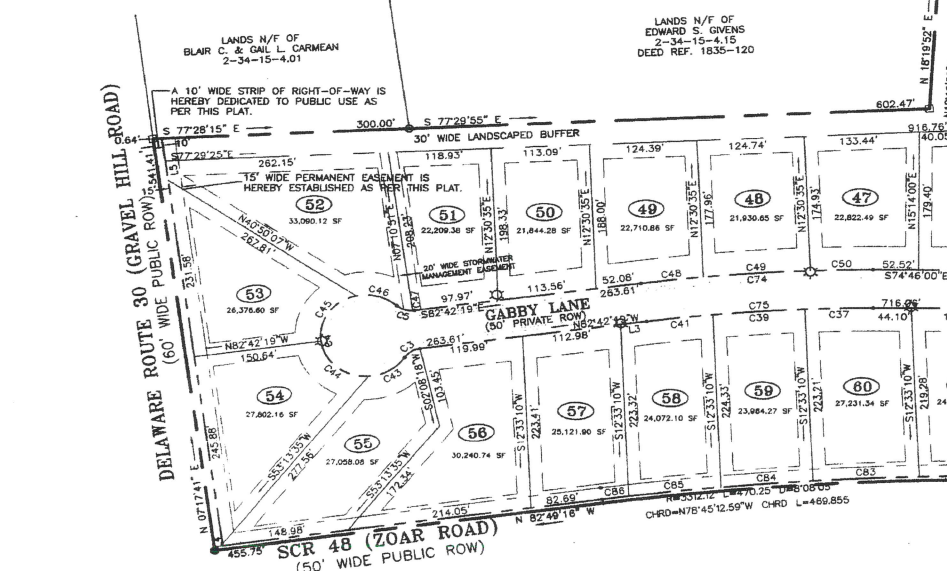
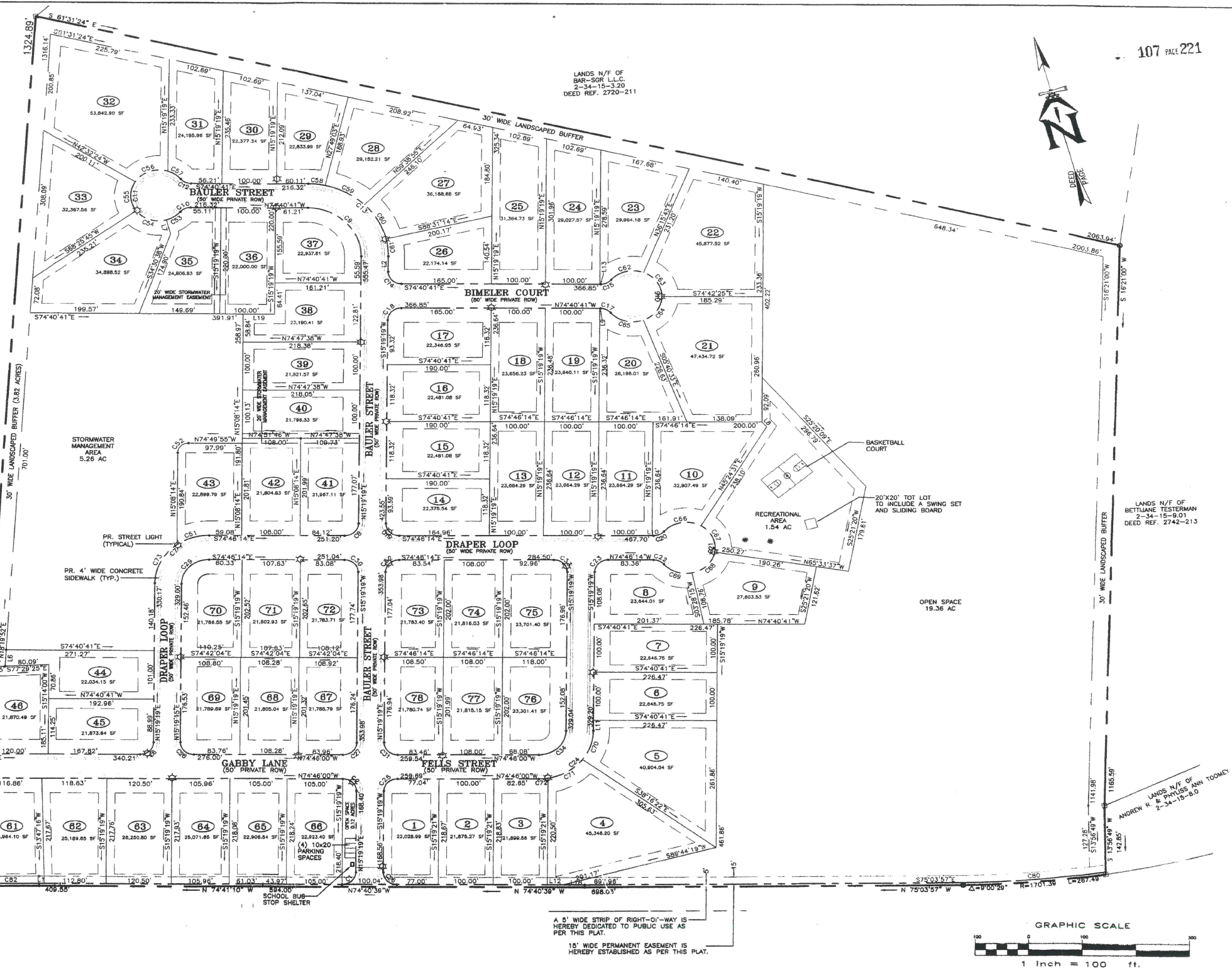


CURVE TABLE					
CURVE	LENGTH	RADIUS	CHORD BEG	CHORD END	DELTA
C1	39.27	25.00	N89°12'20"E	35.36	90°00'00"
C2	39.31	25.00	N89°43'20"W	35.36	90°00'18"
C3	21.87	25.00	S72°13'44"W	21.18	90°07'54"
C4	259.25	53.00	S07°17'41"W	67.85	280°15'48"
C5	21.87	25.00	S87°38'24"E	21.18	90°07'54"
C6	39.23	25.00	N89°16'40"E	35.33	89°54'28"
C7	155.81	100.00	S80°34'11"W	140.59	89°19'38"
C8	39.23	25.00	N89°16'40"E	35.33	89°54'28"
C9	157.08	100.00	N82°40'41"W	141.42	90°00'00"
C10	21.87	25.00	N89°15'22"E	21.18	90°07'54"
C11	259.25	53.00	S19°19'18"W	67.85	280°15'48"
C12	21.87	25.00	S48°35'44"E	21.18	90°07'54"
C13	235.62	150.00	S80°40'41"W	212.13	90°00'00"
C14	39.27	25.00	S87°40'41"E	35.36	90°00'00"
C15	21.87	25.00	N89°15'22"E	21.18	90°07'54"
C16	259.25	53.00	N15°19'18"E	67.85	280°15'48"
C17	21.87	25.00	N48°35'44"W	21.18	90°07'54"
C18	39.27	25.00	S87°40'41"E	35.36	90°00'00"
C19	36.31	25.00	S89°43'28"E	35.36	90°05'32"
C20	21.87	25.00	N89°05'48"E	21.18	90°07'54"
C21	259.25	53.00	N15°19'18"E	67.85	280°15'48"
C22	21.87	25.00	N48°42'18"W	21.18	90°07'54"
C23	39.33	25.00	N89°16'38"E	35.33	89°54'42"
C24	158.93	100.00	S89°16'38"E	141.31	89°54'42"
C25	39.33	25.00	N89°16'38"E	35.33	89°54'42"
C26	39.27	25.00	S87°40'41"E	35.36	90°00'00"
C27	39.23	25.00	N89°18'40"E	35.33	89°54'42"
C28	39.31	25.00	S89°18'40"E	35.36	90°05'18"
C29	78.48	50.00	S88°43'20"E	70.69	90°05'18"
C30	39.31	25.00	N89°18'40"E	35.36	90°05'18"
C31	39.31	25.00	S89°18'40"E	35.36	90°05'18"
C32	36.23	25.00	S89°18'34"E	35.33	89°54'28"
C33	39.31	25.00	N89°18'34"E	35.36	90°05'18"
C34	78.48	50.00	S88°43'20"E	70.69	90°05'18"
C35	78.48	50.00	N88°43'20"E	70.69	90°05'18"
C36	78.48	50.00	S88°43'20"E	70.69	90°05'18"
C37	78.48	50.00	N88°43'20"E	70.69	90°05'18"
C38	107.06	187.08	N19°54'48"E	107.06	90°00'00"
C39	77.19	187.08	N81°55'08"W	77.18	214°21'
C40	50.59	53.00	N74°30'28"E	48.89	84°41'38"
C41	79.03	53.00	S89°27'17"E	71.81	89°24'54"
C42	79.03	53.00	S89°27'17"E	71.81	89°24'54"
C43	50.59	53.00	S89°27'17"E	48.89	84°41'38"
C44	72.03	25.00	S89°22'40"E	2.00	430°19'
C45	72.72	202.50	N81°40'30"W	124.76	203°27'
C46	124.80	202.50	N78°25'30"W	124.76	203°27'
C47	72.48	202.50	N78°25'30"W	72.48	203°27'
C48	82.87	100.00	N81°14'00"E	81.81	89°04'54"
C49	31.43	30.00	S89°09'09"W	28.29	90°01'51"
C50	31.44	30.00	N72°17'30"E	31.18	341°23'
C51	63.86	33.00	S89°01'12"E	60.98	89°01'52"
C52	63.86	33.00	S12°26'41"W	60.98	89°01'52"
C53	63.86	33.00	S89°01'12"E	60.98	89°01'52"
C54	63.86	33.00	N14°28'00"W	62.27	31°48'22"
C55	63.86	33.00	N82°25'30"E	61.51	17°02'28"
C56	63.86	33.00	N18°12'21"E	60.98	89°01'52"
C57	63.86	33.00	N82°25'30"E	61.51	17°02'28"
C58	63.86	33.00	N18°12'21"E	60.98	89°01'52"
C59	63.86	33.00	N82°25'30"E	61.51	17°02'28"
C60	63.86	33.00	N18°12'21"E	60.98	89°01'52"
C61	63.86	33.00	N82°25'30"E	61.51	17°02'28"
C62	63.86	33.00	N18°12'21"E	60.98	89°01'52"
C63	63.86	33.00	N82°25'30"E	61.51	17°02'28"
C64	63.86	33.00	N18°12'21"E	60.98	89°01'52"
C65	63.86	33.00	N82°25'30"E	61.51	17°02'28"
C66	63.86	33.00	N18°12'21"E	60.98	89°01'52"
C67	63.86	33.00	N82°25'30"E	61.51	17°02'28"
C68	63.86	33.00	N18°12'21"E	60.98	89°01'52"
C69	63.86	33.00	N82°25'30"E	61.51	17°02'28"
C70	63.86	33.00	N18°12'21"E	60.98	89°01'52"
C71	75.85	100.00	N72°26'00"E	74.14	43°30'26"
C72	17.44	100.00	S74°44'12"E	17.44	89°00'00"
C73	82.84	100.00	S42°31'50"W	89.63	53°14'57"
C74	270.13	202.50	S42°31'50"W	270.13	89°00'00"
C75	283.20	187.08	N78°53'15"W	283.01	7°36'00"
C76	78.88	25.00	N72°06'52"E	27.39	86°25'18"
C77	287.81	186.36	S72°24'24"E	286.86	89°00'00"
C78	267.41	186.36	S72°24'24"E	267.13	80°15'24"
C79	38.88	25.00	S42°31'50"W	38.88	89°00'00"
C80	102.83	3317.12	N79°34'27"W	102.82	46°34'34"
C81	103.01	3317.12	N72°31'28"W	103.00	20°27'28"
C82	107.67	3317.12	N72°31'28"W	107.67	17°00'00"
C83	107.78	3317.12	N81°22'01"W	107.75	131°41'
C84	30.30	3317.12	N62°33'33"W	30.30	63°12'24"

LINE TABLE		
LINE	LENGTH	BEARING
L1	6.29	S74°41'10"E
L2	31.78	S12°19'18"W
L3	30.61	S82°42'18"E
L4	2.33	N07°17'41"E
L5	54.12	N07°17'41"E
L6	13.18	S89°20'09"E
L7	30.00	S00°30'07"E
L8	1.68	S74°40'41"E
L9	2.74	S74°48'14"E
L10	21.18	N19°18'18"E
L11	31.33	N19°18'18"E
L12	28.50	S74°40'29"E
L13	1.85	S74°40'41"E
L14	10.04	S77°28'15"E
L15	15.08	S77°28'15"E
L16	15.15	S13°38'40"W
L17	5.05	S13°38'40"W
L18	39.27	S74°40'41"E
L19	57.35	S74°40'41"E

LEGEND  
 ○ CONCRETE MONUMENT FOUND  
 □ IRON PIPE FOUND  
 • POINT



TITLE: RECORD SUBDIVISION PLAT  
 PROJECT: ZOAR ESTATES  
 PREPARED FOR: ROBERT GRESS  
 TAX MAP No.: 2-34-15.00-7.00  
 HUNDRED: INDIAN RIVER  
 COUNTY: SUSSEX

APPROVED: [Signature] DATE: 7/3/06  
 PROFESSIONAL ENGINEER

ENGINEERING SURVEYING LAND PLANNING  
**Meridian**  
 CONSULTING ENGINEERS, L.L.C.  
 26412 BROADKILL ROAD, MILTON, DELAWARE 19968  
 (302) 684-4766 • FAX (302) 684-8228  
 "HONESTY, INTEGRITY, RESPECT"

DATE	REVISION	CHKD.
DRAWN BY: S.L.L.	CHECKED BY: J.D.N.	DATE: 7/17/06
SCALE: 1"=100'		PROJECT No: 150-1
		SHEET No: C-2

THIS DRAWING DOES NOT INCLUDE NECESSARY COMPONENTS FOR CONSTRUCTION SAFETY. ALL CONSTRUCTION MUST BE DONE IN COMPLIANCE WITH THE OCCUPATIONAL SAFETY AND HEALTH ACT OF 1970 AND ALL RULES AND REGULATIONS THEREOF APPLICABLE.